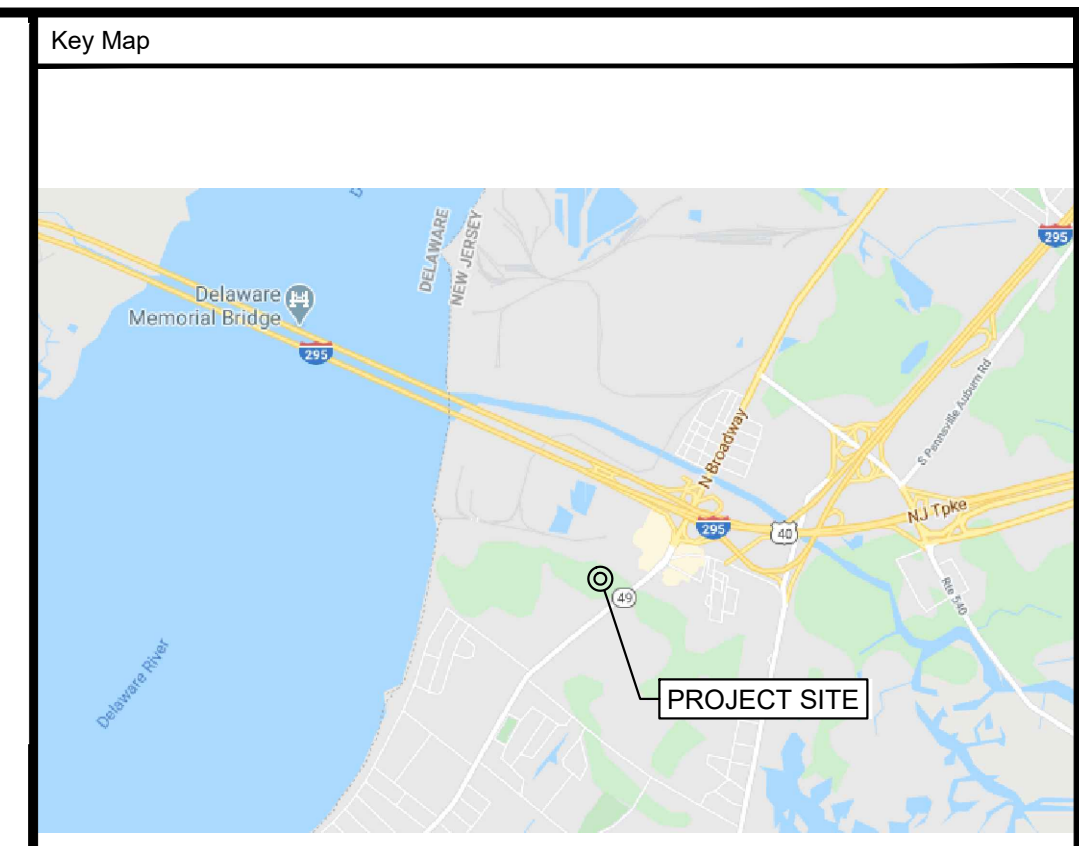
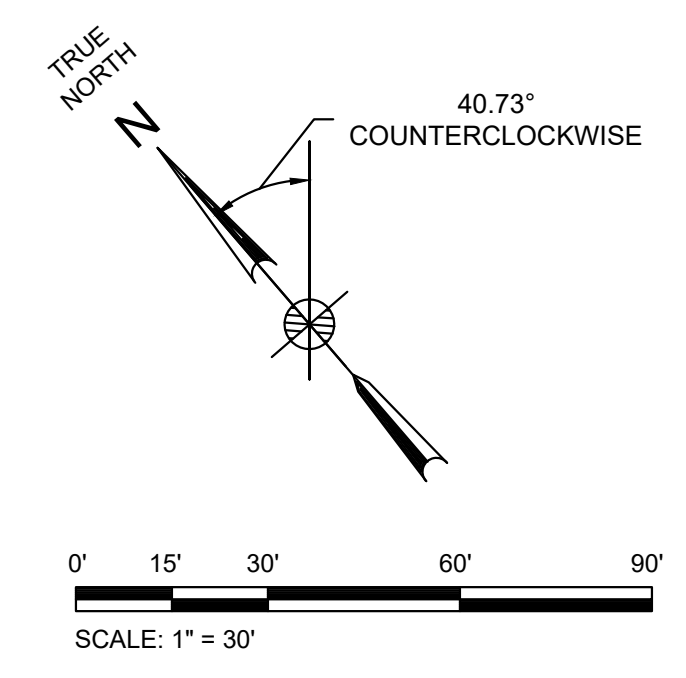


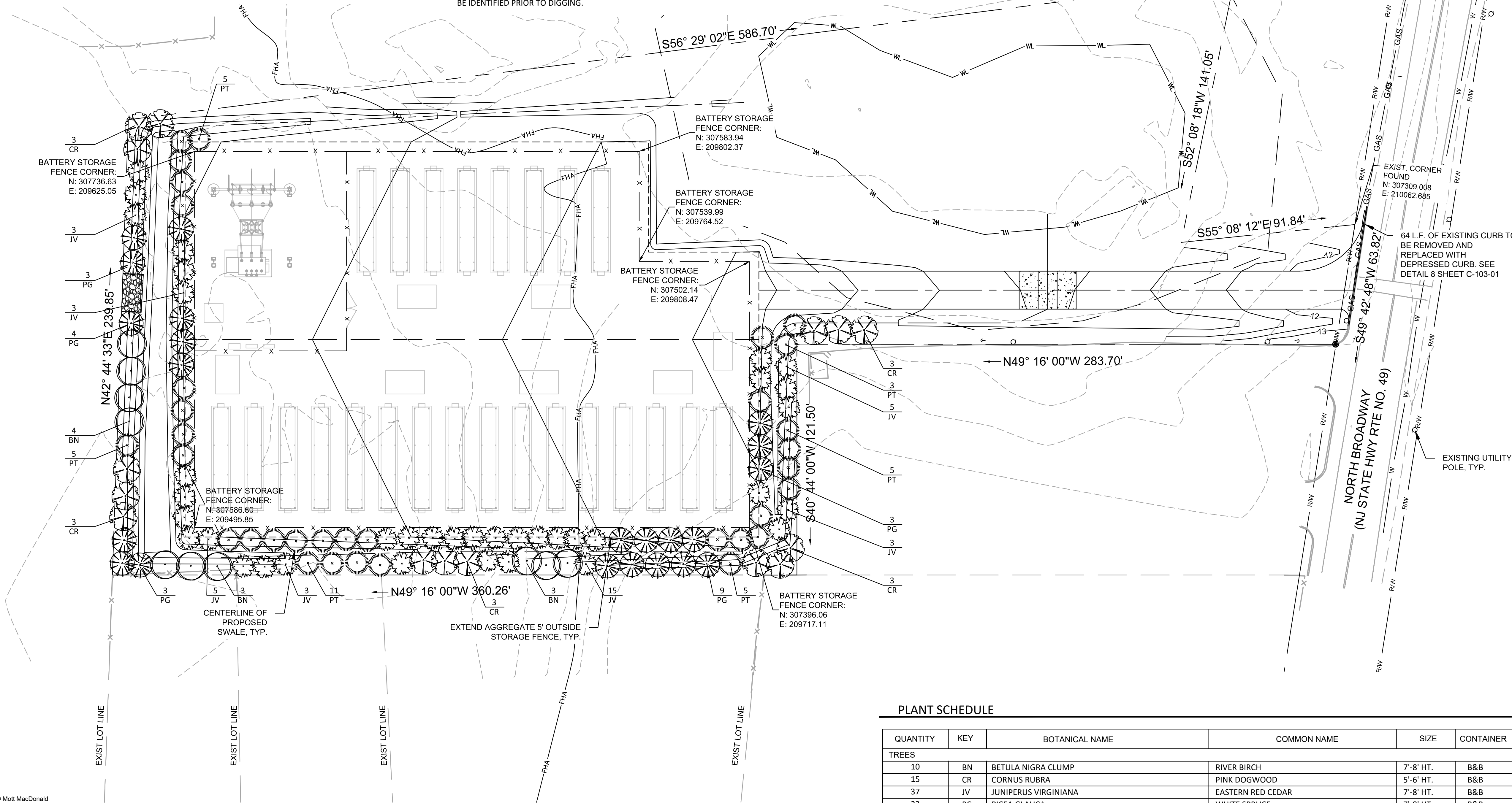
**LANDSCAPE NOTES**

- THIS PLAN SHALL BE USED FOR LANDSCAPE PLANTING PURPOSES ONLY. EXAMINE ALL ENGINEERING DRAWINGS AND FIELD CONDITIONS FOR SPECIFIC LOCATIONS OF UTILITIES, STRUCTURES, ETC. AND NOTIFY THE PROJECT PROFESSIONAL IN REFERENCE TO ANY DISCREPANCIES OR LOCATION CONFLICTS PRIOR TO PLANTING INSTALLATION.
- ALL PLANT MATERIAL SHALL CONFORM TO THE AMERICAN STANDARD FOR NURSERY STOCK, ANSI Z60.1 CURRENT EDITION. THE PLANT MATERIAL SHALL BE TRUE TO SPECIES, VARIETY, SIZE AND BE CERTIFIED DISEASE AND INSECT FREE. THE PROJECT PROFESSIONAL RESERVES THE RIGHT TO REJECT PLANT MATERIAL WHEN DELIVERED TO THE SITE AND UP TO THE TIME OF FINAL ACCEPTANCE.
- NO PLANT SUBSTITUTIONS SHALL BE PERMITTED WITH REGARDS TO SIZE, SPECIES VARIETY, ETC. WITHOUT WRITTEN PERMISSION OF THE PROJECT PROFESSIONAL. WRITTEN PROOF OF PLANT MATERIAL UNAVAILABILITY MUST BE PROVIDED.
- LOCATION AND SPACING FOR PROPOSED VEGETATION IS AS SHOWN ON LANDSCAPE PLANS. FINAL ADJUSTMENTS TO BE MADE IN THE FIELD AND AS DIRECTED BY PROJECT PROFESSIONAL TO REFLECT EXISTING SITE CONDITIONS.
- THE PLANTING PLAN SHALL TAKE PRECEDENCE OVER THE PLANT SCHEDULE SHOULD ANY PLANT QUANTITY DISCREPANCIES OCCUR.
- ALL PLANT MATERIAL SHALL BE PLANTED IN CONFORMANCE WITH THE TYPICAL PLANTING DETAILS AND ACCEPTED HORTICULTURAL PRACTICES. INSTALL ALL PLANT MATERIAL ON UNDISTURBED GRADE. CUT AND REMOVE BURLAP FROM THE TOP ONE-THIRD OF THE ROOT BALL. NO SYNTHETIC MATERIAL IS TO REMAIN IN PLANTING HOLE. SEE DETAIL SHEET D-1 FOR PLANTING DETAILS.
- PROJECT PROFESSIONAL SHALL HAVE FINAL ACCEPTANCE OF ALL PLANT MATERIAL.
- PROVIDE PLANTING PITS AS INDICATED ON PLANTING DETAILS.
- PLANT ROOT FLAIR SHALL BE EXPOSED AT TIME OF PLANTING. PLANTS SHALL BE INSTALLED AT SAME GRADE AS GROWN IN NURSERY.
- NEWLY INSTALLED PLANT MATERIAL SHALL BE THOROUGHLY WATERED AT THE TIME OF INSTALLATION BY THE LANDSCAPE CONTRACTOR. LANDSCAPE CONTRACTOR IS RESPONSIBLE FOR THE REGULAR WATERING OF PLANT MATERIAL THROUGH THE FIRST YEAR OF GROWTH, WHICH SHALL BEGIN UPON THE DAY OF FINAL ACCEPTANCE OF THE PLANT MATERIAL.
- ALL PLANT MATERIAL SHALL BE GUARANTEED BY THE CONTRACTOR FOR ONE (1) YEAR AFTER THE DATE OF FINAL ACCEPTANCE.
- ALL DISTURBED AREAS SHALL RECEIVE TEMPORARY AND PERMANENT STABILIZATION DEPENDING UPON STAGE OF WORK AND TIME OF YEAR (REFER TO N.J. SOIL EROSION AND SEDIMENT CONTROL REGULATIONS).
- WIRE BASKETS ARE TO BE CUT AND FOLDED TO BOTTOM OF PLANTING HOLE AWAY FROM SIDES OF ROOT BALL.
- PROVIDE SUSTAINED RELEASE 5-10-5 FERTILIZER FOR ALL PLANT MATERIAL IN QUANTITIES AS PER MANUFACTURER'S RECOMMENDATIONS. THOROUGHLY MIX IN TOP 12" OF ALL PLANTING AREAS.
- ALL PLANTS ARE SHOWN SEMI-MATURE SIZE ON PLANS. SIZES INDICATED IN PLANT LIST ARE THE APPROXIMATE SIZES AT TIME OF INSTALLATION.
- PLANTING PITS ARE TO BE THREE TIMES THE ROOT BALL DIAMETER.
- TREES TO BE HANDLED BY ROOT BALL ONLY. HANDLING OF TREES BY THE TRUNK OR THE PLACING OF STRAPS AROUND THE TRUNK WILL BE CAUSE FOR IMMEDIATE REJECTION OF PLANT MATERIAL BY THE PROJECT PROFESSIONAL.
- CONTRACTOR RESPONSIBLE FOR PROVIDING AND INSTALLING 4" LAYER OF SHREDDED HARDWOOD BARK MULCH IN ALL PLANTING BEDS UNLESS OTHERWISE NOTED. CONTRACTOR TO PROVIDE AND INSTALL 4" LAYER OF COMPACTED STONE DUST MULCH IN PLANTING BEDS AT PLAYGROUND AREAS.
- ALL DISTURBED AREAS TO BE RESTORED TO THE SATISFACTION OF THE PROJECT PROFESSIONAL.
- TREES TO BE INSTALLED WITH SAME ORIENTATION AS AT PLACE OF ORIGINAL GROWTH. NORTH SIDE OF TREE TO BE IDENTIFIED PRIOR TO DIGGING.
- CONTRACTOR IS RESPONSIBLE FOR THE INITIAL PRUNING OF TREES. PRUNING TO BE LIMITED TO CROSSOVER LIMBS, CO-DOMINANT LEADERS, AND BROKEN OR DEAD BRANCHES. SOME INTERIOR TWIGS AND LATERAL BRANCHES MAY BE PRUNED. HOWEVER, DO NOT REMOVE THE TERMINAL BUDS OF BRANCHES THAT EXTEND TO THE EDGE OF THE CROWN.
- CONTRACTOR IS RESPONSIBLE FOR THE REMOVAL OF TREE STAKES 1 YEAR FROM THE DATE OF FINAL ACCEPTANCE.
- CONTRACTOR TO SCAFFY (LOOSEN SOIL) BOTTOMS AND SIDES OF PLANTING PITS PRIOR TO PLACING AMENDED PLANTING SOIL.
- TREES IN LAWN AREAS MIN 3X ROOT BALL DIAMETER OR AREA EQUAL TO 3X ROOTBALL DIAMETER.
- REMOVE ALL SOIL WITH IN PLANTING PIT TO 3 FEET DEPTH AND REPLACE WITH AMENDED PLANTING SOIL
- ALL PROPOSED PLANTING AREAS ARE TO RECEIVE 24" OF PLANTING SOIL.



**Legend**

	REQD MAJOR CONTOUR ELEVATION
	REQD MINOR CONTOUR ELEVATION
	EXISTING MAJOR ELEVATION CONTOUR
	EXISTING MINOR ELEVATION CONTOUR
	REQD FACILITY YARD STONE
	REQD CHAIN LINK FENCE
	REQD SPOT ELEVATION
	DRAINAGE FLOW DIRECTION
	RIGHT OF WAY LINE
	PROPERTY LINE
	EXIST. GAS LINE
	EXIST. WATER LINE
	PROPOSED SWALE CENTERLINE
	EXIST. 500 YEAR FLOOD LINE
	EXIST. WETLAND
	EXIST. WETLAND BUFFER
	EXIST. FENCE
	EXIST. UTILITY POLE
	DETAIL # SEE SHEET C-103-01
	PROPOSED SUBGRADE ELEVATION
	PROPOSED TOP OF CONCRETE ELEVATION



**PLANT SCHEDULE**

QUANTITY	KEY	BOTANICAL NAME	COMMON NAME	SIZE	CONTAINER
<b>TREES</b>					
10	BN	BETULA NIGRA CLUMP	RIVER BIRCH	7'-8' HT.	B&B
15	CR	CORNUS RUBRA	PINK DOGWOOD	5'-6' HT.	B&B
37	JV	JUNIPERUS VIRGINIANA	EASTERN RED CEDAR	7'-8' HT.	B&B
22	PC	PICEA GLAUCA	WHITE SPRUCE	7'-8' HT.	B&B
34	PT	PSEUDOTSUGA TAXIFOLIA	DOUGLAS FIR	7'-8' HT.	B&B

B	12/14/20	JJS	REVISED PER REVIEW COMMENT	MPU	KAW
A	11/05/20	JJS	ISSUED FOR PERMIT	MPU	KAW
Rev	Date	Drawn	Description	Ch'k'd	App'd

**M M**  
**MOTT MACDONALD**

101 Station Drive  
Suite 130  
Westwood, MA 02090  
United States  
T +1 (781) 915-0015  
F +1 (781) 915-0001  
W www.mottmac.com

Client  
**Churchtown Battery Real Estate, LLC**  
334 N. Broadway  
Pennsville, NJ 08070  
Block: 301  
Lot: 16.01

Title  
**Churchtown Battery Storage Project Individual Landscape Plan**

JOHN J. SABOL, LLA NJ LICENSE NO. 21AS001022	Designed JJS	Check MPU
	Drawn JJS	Approved KAW
Scale at ANSI D 1"=30'	Date 11/5/2020	Rev A
Drawing Number <b>507102308-L-101-01</b>		